



■ **Sling Hook c/w Safety Latch Clevis Type**

Made to EN1677-2 specifications  
Finish: Powder coated yellow



■ **Self Locking Hook Clevis Type**

Made to EN1677-3 specifications  
Finish: Powder coated yellow



■ **Grab Hook with Cradle Clevis Type**

Made to EN1677-2 specifications  
Finish: Powder coated yellow



■ **Foundry Hook Clevis Type**

Made to EN1677-2 specifications  
Finish: Powder coated yellow



■ **Shortening Clutch Clevis Type**

Made to EN1677-1 specifications  
Finish: Powder coated yellow



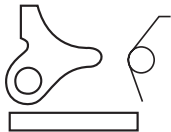
■ **Connecting Link**

Made to EN1677-1 specifications  
Finish: Powder coated yellow



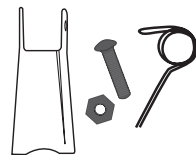
■ **Short Link Chain**

Made to EN818-2 specifications



■ **Trigger Kit for Self Locking Hook**

Available for Clevis and Eye Type



■ **Latch Kit for Safety Hook**

Available for Clevis and Eye Type

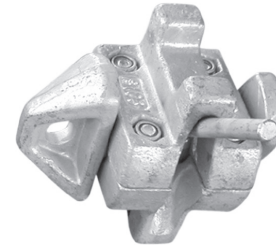


■ **Sling ID Tag for SWR Sling**



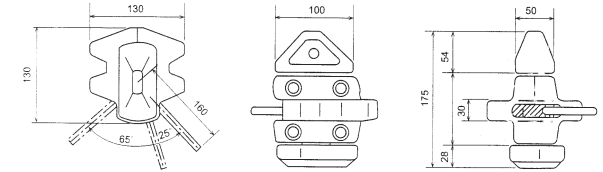
■ **Sling ID Tag for Chain Sling**

■ **Twistlock – Intermediate**

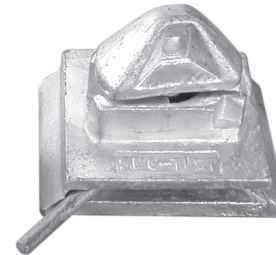


Break Load	Safe Work Load Limit	Proof Load	Weight
[t]	[t]	[t]	[kg]
30	15	22.5	7.4
50	25	37.5	7.4

Material: Alloy steel or ductile iron  
Finish: Hot-dip galvanised

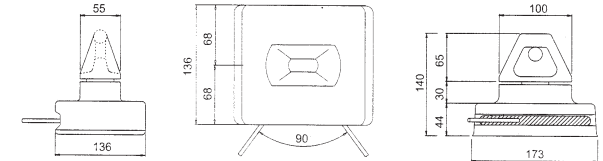


■ **Base Twistlock – Transversal**

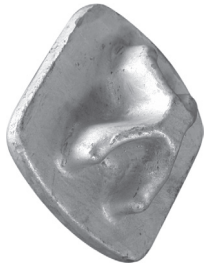


Break Load	Safe Work Load Limit	Proof Load	Weight
[t]	[t]	[t]	[kg]
31	15.8	23	6.2
36	18	27	6.2

Material: Alloy steel or ductile iron  
Finish: Hot-dip galvanised

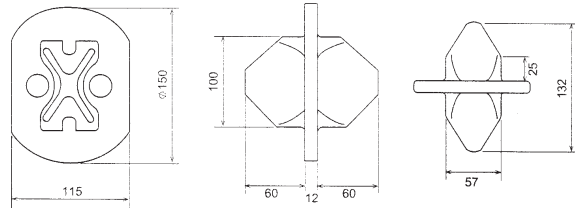


## ■ Stacking Cone – Single



Break Load	Safe Work Load Limit	Proof Load	Weight
[t]	[t]	[t]	[kg]
30	15	22.5	3.0

Material: Alloy steel  
Finish: Hot-dip galvanised

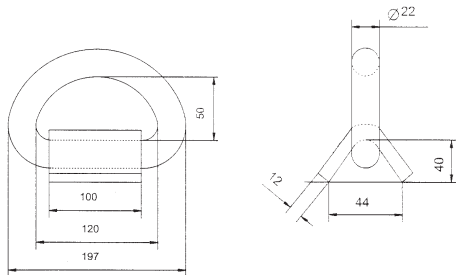


## ■ D-Ring and Clamp

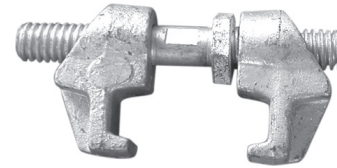


Break Load	Safe Work Load Limit	Proof Load	Weight
[t]	[t]	[t]	[kg]
50	25	37.5	3.2

Material: Alloy steel or carbon steel  
Finish: Hot-dip galvanised

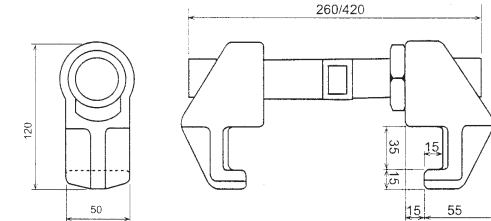


## ■ Bridge Fitting

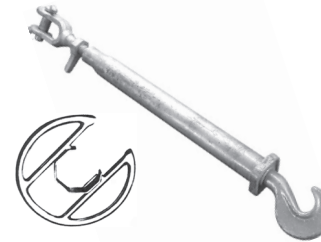


Break Load	Safe Work Load Limit	Proof Load	Weight
[t]	[t]	[t]	[kg]
8	4	6	4.5

Material: Steel  
Finish: Hot-dip galvanised



## ■ Turnbuckles – Lashing Bar Type



Weight: 1.5 kg

Length In	Length Out	Break Load	Weight
[mm]	[mm]	[t]	[kg]
950	1350	36	18

Material: Forged steel  
Finish: Galvanised

## ■ Lashing Turnbuckle



Length In	Length Out	Break Load	Weight
[mm]	[mm]	[t]	[kg]
1270	1775	20	16.80

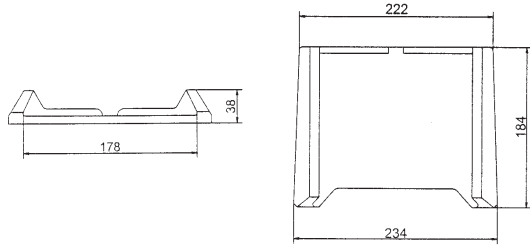
Material: Forged steel  
Finish: Galvanised

### ■ Dovetail Socket 55° – Single

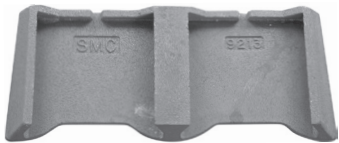


Break Load	Safe Work Load Limit	Proof Load	Weight
[t]	[t]	[t]	[kg]
36	18	27	4.8

Material: Cast steel  
Finish: Primer

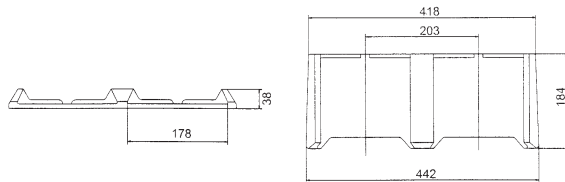


### ■ Dovetail Socket 55° – Double



Break Load	Safe Work Load Limit	Proof Load	Weight
[t]	[t]	[t]	[kg]
36	18	27	8.8

Material: Cast steel  
Finish: Primer

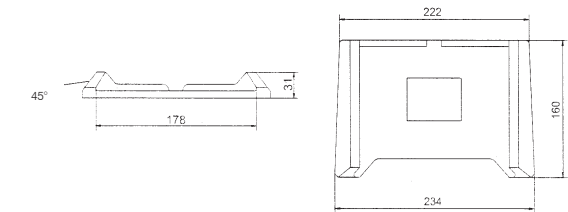


### ■ Dovetail Socket 45° – Single

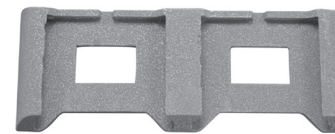


Break Load	Safe Work Load Limit	Proof Load	Weight
[t]	[t]	[t]	[kg]
36	18	27	3.0

Material: Cast steel  
Finish: Hot-dip galvanised

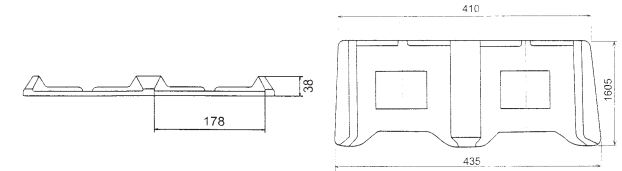


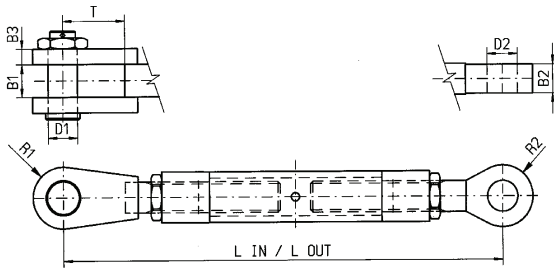
### ■ Dovetail Socket 45° – Double



Break Load	Safe Work Load Limit	Proof Load	Weight
[t]	[t]	[t]	[kg]
36	18	27	5.8

Material: Cast steel  
Finish: Hot-dip galvanised





Heavy Duty Turnbuckle

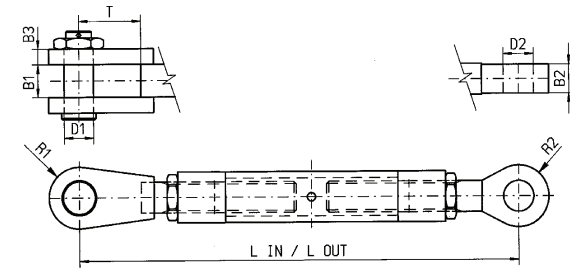
### ■ Heavy Duty Turnbuckle

Product Code	Safe Work Load Limit	Jaw/Jaw		Eye/Jaw		Eye/Eye		Weight
		Length In	Length Out	Length In	Length Out	Length In	Length Out	
		[t]	[mm]	[mm]	[mm]	[mm]	[mm]	
43055080	13.5	935	1260	890	1215	840	1165	52
43065080	17	1010	1360	965	1315	920	1270	69
43070080	25	1085	1415	1030	1360	975	1305	85
43075080	30	1160	1530	1090	1460	1020	1390	100
43080080	35	1250	1650	1175	1575	1100	1500	140
43090080	45	1300	1780	1235	1715	1170	1650	180
43100080	55	1380	1890	1325	1835	1270	1780	240
43110080	70	1480	2025	1435	1985	1390	1940	340
43120080	85	1565	2200	1540	2175	1515	2150	420
43130080	100	1630	2360	1615	2345	1600	2330	510
43140080	120	1745	2340	1740	2335	1735	2330	600
43160080	160	1870	2470	1865	2465	1860	2460	700
43180080	200	2020	2640	2010	2630	2000	2620	960
43200080	250	2170	2840	2190	2860	2210	2880	1120

Tolerance  $\pm 5\%$   
Factor of Safety 5:1

Material: High tensile steel  
Finish: Painted or galvanised

Available with two security nuts or plates on request.  
Custom designed screws can be constructed in any size and capacity.



Standard Turnbuckle

### ■ Standard Turnbuckle

Thread $\emptyset$	Safe Work Load Limit	Jaw					Eye		
		B1	B3	T	D1	R1	B2	R2	D2
		[mm]	[mm]	[mm]	[mm]	[mm]	[mm]	[mm]	[mm]
55 x 8	13.5	55	20	122	51	60	50	60	53
65 x 8	17	65	28	130	63	70	55	70	65
70 x 8	25	76	30	145	70	70	70	70	72
75 x 8	30	80	35	160	72	75	70	75	74
80 x 8	35	90	40	175	80	85	80	85	82
90 x 8	45	100	45	175	90	95	90	95	93
100 x 8	55	110	50	175	100	105	100	105	103
110 x 8	70	110	55	175	108	115	100	115	111
120 x 8	85	130	75	175	127	135	125	135	130
130 x 8	100	140	90	175	140	145	125	145	143
140 x 8	120	155	90	190	152	170	140	170	155
160 x 8	160	170	100	210	178	190	160	190	181
180 x 8	200	190	110	250	190	220	170	200	193
200 x 8	250	210	120	280	250	260	190	260	253

Tolerance  $\pm 5\%$   
Factor of Safety 5:1

Material: High tensile steel  
Finish: Painted or galvanised

Available with two security nuts or plates on request.  
Custom designed screws can be constructed in any size and capacity.